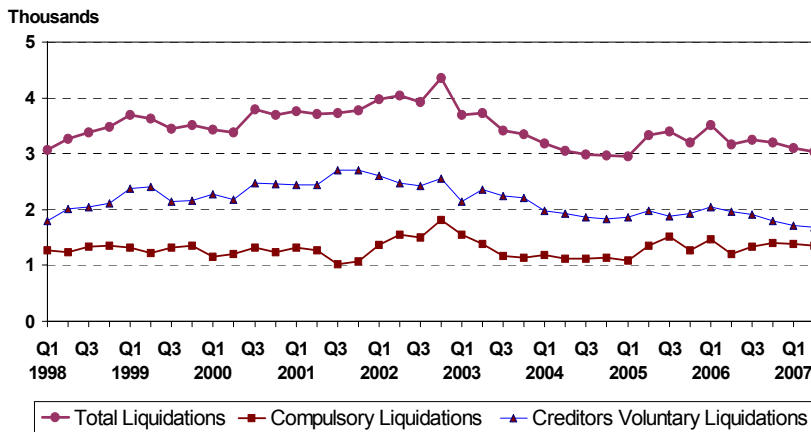


STRICTLY EMBARGOED UNTIL 9.30 AM, 3 August 2007

## STATISTICS RELEASE: INSOLVENCIES IN THE SECOND QUARTER 2007

Statistics showing insolvencies in the second quarter 2007 are published today (3 August) by the Insolvency Service.

### Number of Company Liquidations in England and Wales (Seasonally Adjusted)



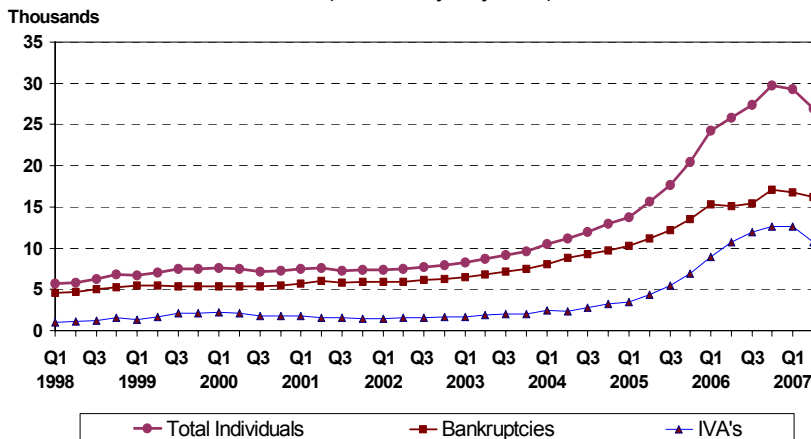
Source: Insolvency Service

### COMPANY LIQUIDATIONS

There were 3,032 liquidations in England and Wales in the second quarter of 2007 on a seasonally adjusted basis. This was a decrease of 2.1% on the previous quarter and a decrease of 4.2% on the same period a year ago.

This was made up of 1,349 compulsory liquidations, a decrease of 2.4% on the previous quarter and an increase of 12.4% on the corresponding quarter of the previous year, and 1,682 creditors voluntary liquidations, a decrease of 1.9% on the previous quarter and a decrease of 14.4% on the corresponding quarter of the previous year.

### Number of Individual Insolvencies in England and Wales (Seasonally Adjusted)



Source: Insolvency Service

0.6% of active companies went into liquidation in the twelve months ended Q2 2007, the same as the previous quarter and down from 0.7% in the corresponding quarter of 2006.

### INDIVIDUAL INSOLVENCIES

There were 26,956 individual insolvencies in England and Wales in the second quarter of 2007 on a seasonally adjusted basis. This was a decrease of 8.1% on the previous quarter and an increase of 4.2% on the same period a year ago.

This was made up of 16,258 bankruptcies, a decrease of 2.9% on the previous quarter and an increase of 7.7% on the corresponding quarter of the previous year, and 10,698 Individual Voluntary Arrangements (IVAs), a decrease of 15.1% on the previous quarter and a decrease of 0.7% on the corresponding quarter of the previous year.

### Number of Insolvencies in England and Wales (seasonally adjusted)

	2006 Q2	2006 Q3	2006 Q4	2007 Q1r	2007 Q2p	Percentage change Q2 2007 on:	
						Q1 2007	Q2 2006
<b>Company Liquidations</b>	<b>3,165</b>	<b>3,250</b>	<b>3,202</b>	<b>3,097</b>	<b>3,032</b>	<b>-2.1</b>	<b>-4.2</b>
of which:							
<b>Compulsory</b>	1,201	1,335	1,406	1,382	1,349	-2.4	12.4
<b>Creditors</b>	1,964	1,914	1,796	1,714	1,682	-1.9	-14.4
<b>Voluntary</b>							
<b>Individuals</b>	<b>25,869</b>	<b>27,430</b>	<b>29,715</b>	<b>29,338</b>	<b>26,956</b>	<b>-8.1</b>	<b>4.2</b>
of which:							
<b>Bankruptcies</b>	15,090	15,486	17,070	16,742	16,258	-2.9	7.7
<b>IVAs</b>	10,779	11,944	12,645	12,597	10,698	-15.1	-0.7

p = provisional, r = revised

### INSOLVENCIES IN SCOTLAND AND NORTHERN IRELAND

The following tables present recent trends in insolvencies in Scotland and Northern Ireland, complementing those for England and Wales above (longer series back to 1998 are presented in the accompanying detailed tables).

#### Number of Insolvencies in Scotland (not seasonally adjusted)

	2006 Q2	2006 Q3	2006 Q4	2007 Q1	2007 Q2p	Percentage change Q2 2007 on:	
						Q1 2007	Q2 2006
<b>Company Liquidations</b>	<b>133</b>	<b>156</b>	<b>132</b>	<b>166</b>	<b>165</b>	<b>-0.6</b>	<b>24.1</b>
of which:							
<b>Compulsory</b>	99	132	89	132	131	-0.8	32.3
<b>Creditors</b>	34	24	43	34	34	0.0	0.0
<b>Voluntary</b>							
<b>Individuals</b>	<b>3,544</b>	<b>3,601</b>	<b>3,382</b>	<b>3,471</b>	<b>3,498</b>	<b>0.8</b>	<b>-1.3</b>
of which:							
<b>Sequestrations</b>	1,305	1,528	1,356	1,505	1,606	6.7	23.1
<b>Protected Trust Deeds</b>	2,239	2,073	2,026	1,966	1,892	-3.8	-15.5

p = provisional

#### Number of Insolvencies in Northern Ireland (not seasonally adjusted)

	2006 Q2	2006 Q3	2006 Q4	2007 Q1	2007 Q2p	Percentage change Q2 2007 on:	
						Q1 2007	Q2 2006
<b>Company Liquidations</b>	<b>41</b>	<b>28</b>	<b>30</b>	<b>36</b>	<b>38</b>	<b>5.6</b>	<b>-7.3</b>
of which:							
<b>Compulsory</b>	24	15	20	29	29	0.0	20.8
<b>Creditors</b>	17	13	10	7	9	28.6	-47.1
<b>Voluntary</b>							
<b>Individuals</b>	<b>495</b>	<b>425</b>	<b>482</b>	<b>343</b>	<b>338</b>	<b>-1.5</b>	<b>-31.7</b>
of which:							
<b>Bankruptcies</b>	286	241	264	218	228	4.6	-20.3
<b>IVAs</b>	209	184	218	125	110	-12.0	-47.4

p = provisional

## Notes to Editors

1. The official Insolvency Statistics are the most comprehensive record of the number of corporate and individual insolvencies in England and Wales. Insolvencies in Scotland and Northern Ireland are also included, but are shown separately as they are covered by separate legislation, there are some differences in definition, and policy responsibility for them lies within the devolved administrations.

2. The statistics for England and Wales are derived from administrative records of the department for Business Enterprise and Regulatory Reform (BERR), Insolvency Service and Companies House Executive Agencies. For Scotland, the company insolvency statistics are derived from administrative records at Companies House, Scotland. Figures for individual insolvencies in Scotland are provided by the Office of the Accountant in Bankruptcy (AIB). The Northern Ireland statistics are derived from administrative records of the DETI Insolvency Service and Companies Registry.

3. Numbers of insolvencies are not directly comparable with official estimates of business stock, formations or closures. Statistics of business start-ups and closures that are directly comparable with each other have been assembled from VAT records and are published by BERR. The latest figures are those for 2005, and were issued in a BERR press notice on 24 October 2006. More detailed figures are available via the on-line database NOMIS. Additionally, analysis into the number of firms in the United Kingdom estimated the total number of businesses at the start of 2005 at 4.3 million.

4. The X11ARIMA program (developed by Statistics Canada) is used for the seasonal adjustment of the insolvency statistics for England and Wales, this being the recommended program within UK National Statistics. The data series covering Scotland and Northern Ireland do not demonstrate consistent seasonality and only the raw (unadjusted) series are presented.

5. Insolvent companies in England & Wales and Scotland are dealt with under the Insolvency Act of 1986 and, in Northern Ireland, by the Insolvency (Northern Ireland) Order 1989. They can **either** be the subject of a **compulsory liquidation** (winding-up) order obtained from the court by a creditor, shareholder or director **or** themselves pass a resolution, subject to the approval of a creditors' meeting that the company be wound up voluntarily (**creditors voluntary liquidations**, registered at Companies House/Companies Registry). In either case they are said to have been **wound-up**, and numbers are given in Tables 1, 6 and 8. A third type of winding-up, members' voluntary liquidation, is not included because it does not involve insolvency.

6. The Insolvency Act 1986 and, in Northern Ireland, the Insolvency (Northern Ireland) Order 1989 also introduced the procedures of **company administration orders** and **company voluntary arrangements (CVAs)**. The administration procedure gives a period of time during which creditors are restrained from taking action and a court appointed administrator puts forward proposals to deal with the company's financial difficulties. The CVA procedure aids business by enabling a company in financial difficulty to come to a binding agreement with its creditors. These are listed separately under Table 3 for England and Wales and Table 7 for Scotland.

7. The Enterprise Act 2002 introduced revisions to the corporate administration procedures, replacing Part II of the Insolvency Act 1986 with Schedule B1. These include the introduction of additional entry routes into administration that do not require the making of an administration order and a streamlined process for **Administrations** whereby a

company can in some circumstances be dissolved without recourse to liquidation. The primary objective of administration (and of CVAs) is the rescue of the company as a going concern; where liquidation does result these cases will be recorded under the insolvency figures at Tables 1 and 6. These provisions came into force on 15<sup>th</sup> September 2003 and **Administrations under the Enterprise Act** have been included on Tables 3 and 7 from Q3 2003 (dissolution follows 3 months after a notice is filed with the Registrar of Companies, if no objections are raised by the court). On 27<sup>th</sup> March 2006 the Insolvency (Northern Ireland) Order 2005 introduced similar revisions to the corporate administration procedures in Northern Ireland, replacing Part III of the Insolvency (Northern Ireland) Order 1989 with Schedule B1.

8. **Receivership appointments** comprise **administrative receivers** appointed under the 1986 Act (and the 1989 Order for Northern Ireland) and certain other receivership appointments, for example under the Law of Property Act 1925. Due to the use of the same statutory documentation for different types of receivership, it is not possible to give a breakdown between them. The provisions of the Enterprise Act 2002 [section 250] (Insolvency [Northern Ireland] Order 2005 [Article 5]) have made some changes to the procedures for administrative receivership.

9. Individual insolvencies in England and Wales and in Northern Ireland are made up of **bankruptcy orders** and **individual voluntary arrangements (IVAs)**. Insolvent individuals in England and Wales are dealt with mainly under the Insolvency Act 1986. A bankruptcy order is made on the petition of the debtor or one or more of his creditors when the court is satisfied that there is no prospect of the debt being paid. (Figures for bankruptcy orders include orders relating to the estates of deceased debtors). There are also individual voluntary arrangements (IVAs) and deeds of arrangement (the latter under the Deeds of Arrangement Act 1914), which enable debtors to come to an agreement with their creditors. Table 2 summarises the above procedures (IVAs and Deeds of Arrangement are now included under a single column) and Table 2b provides bankruptcy orders further split by petition type. Changes to bankruptcy law in England and Wales introduced by the Enterprise Act 2002 came into force on 1 April 2004 – the Act made no changes to the existing individual voluntary arrangement regime.

10. Bankruptcy Restriction Orders (BROs) and Bankruptcy Restriction Undertakings (BRUs) were introduced under the Enterprise Act 2002 to impose additional restrictions on bankrupts whose conduct is considered to have been dishonest or blameworthy. The provisions of this came into effect on 1 April 2004, but cases could only be identified based on conduct *after* that date. A BRO is made by the court, whereas a BRU is an undertaking made by the bankrupt who agrees to the restriction without any court proceedings. These are recorded under Table 2c, and the figures record numbers of BROs/BRUs made in each period, they do not, in general, relate to the date of the original bankruptcy order.

11. Table 2c also records numbers of Income Payment Orders (IPOs) and Income Payment Agreements (IPAs) where the bankrupt makes regular payments from surplus income towards his/her debts for a period of time, either by court order or by agreement. The figures record numbers of IPOs/IPAs made in each period, they do not, in general, relate to the date of the original bankruptcy order. Table 2c records a number of IPAs before Q2 2004 because the IPA provisions of the Enterprise Act 2002 (commenced on 1 April 2004) were applicable, upon commencement, to pre-commencement bankruptcies.

12. Insolvent individuals in Scotland (Table 6) are subject to **sequestration** (bankruptcy) or **protected trust deeds** under the Bankruptcy (Scotland) Act 1985 (as

amended). This Act was amended by the Bankruptcy (Scotland) Act 1993. Protected trust deeds are voluntary arrangements in Scotland, but although they fulfil much the same role as individual voluntary arrangements, there are important differences in the way they are set up and administered. Details of both sequestrations and protected trust deeds are found on the register of insolvencies, which is maintained by the Accountant in Bankruptcy. Further information about insolvency in Scotland can be found on the Accountant's website at [www.aib.gov.uk](http://www.aib.gov.uk).

13. Insolvent individuals in Northern Ireland are dealt with under the Insolvency (Northern Ireland) Order 1989 and are recorded under Table 8. On 27 March 2006 the Insolvency (Northern Ireland) Order 2005 came into operation and implemented similar changes to bankruptcy procedures as the Enterprise Act 2002 introduced in England and Wales. Further information about insolvency in Northern Ireland can be found on their website at [www.insolvencyservice.detini.gov.uk](http://www.insolvencyservice.detini.gov.uk).

14. Under the Insolvency Act 1986 and the Insolvent Partnerships Order and, in Northern Ireland, the Insolvency (Northern Ireland) Order 1989 and the Insolvent Partnerships Order (Northern Ireland) 1995, insolvent partnerships may be wound up as an unregistered company or administered following bankruptcy orders against the partners. Insolvent Partnerships can also enter administration or a voluntary arrangement.

15. Company liquidations and bankruptcy orders (relating to the self-employed) in England and Wales broken down by industry are not currently available due to development work to update the classification of new cases to the Standard Industrial Classification (SIC) 2003. This will bring them into line with other official statistics. Industry breakdowns for England and Wales are published one quarter in arrears of the headline series and figures according to the previously used Insolvency Trade Classification (ITC) are available up to Q3 2006. However, the broad split of bankruptcy orders into self-employed and other individuals is available under Table 2b.

16. Company liquidations in Scotland are now available based on the SIC2003 industry breakdown and these can be found in Table 6b for Q1 2007 only. Earlier data are available separately classified according to the Insolvency Trade Breakdown (ITC).

17. Information concerning insolvency legislation and procedure in England and Wales may be obtained from the Insolvency Service website at [www.insolvency.gov.uk](http://www.insolvency.gov.uk). Additionally, details of recent insolvency research and policy evaluation can be found at <http://www.insolvency.gov.uk/insolvencyprofessionandlegislation/insolvencylaw.htm>.

### **National Statistics**

National Statistics are produced to high professional standards set out in the National Statistics Code of Practice. They undergo regular quality assurance reviews to ensure that they meet customer needs. They are produced free from any political interference.

You can find a range of National Statistics on the Internet – [www.statistics.gov.uk](http://www.statistics.gov.uk)

**Press Enquiries:** Lorna Dennis  
Insolvency Service Press Officer  
Tel: +44 (0)20 7637 6279  
Fax: +44 (0)20 7291 6731

**Non Media Enquiries**

Policy Directorate : Statistics  
**Gary Mills** +44 (0)20 7637 6504  
**Margaret Sims** +44 (0)20 7637 6443

E-Mail:

[gary.mills@insolvency.gsi.gov.uk](mailto:gary.mills@insolvency.gsi.gov.uk)

[mita.kerai@insolvency.gsi.gov.uk](mailto:mita.kerai@insolvency.gsi.gov.uk)

[margaret.sims@insolvency.gsi.gov.uk](mailto:margaret.sims@insolvency.gsi.gov.uk)

Internet:

<http://www.insolvency.gov.uk/otherinformation/statistics/insolv.htm>

Out of hours cover

**Public Enquiries** +44 (0)20 7215 5000

**Textphone** +44 (0)20 7215 6740

(for those with hearing impairment)

# 1. COMPANY LIQUIDATIONS\* IN ENGLAND AND WALES

Years	Not Seasonally Adjusted			Seasonally Adjusted		
	Total	Compulsory Liquidations	Creditors' Voluntary Liquidations	Total	Compulsory Liquidations	Creditors' Voluntary Liquidations
<b>1998</b>	13,203	5,216	7,987			
<b>1999</b>	14,280	5,209	9,071			
<b>2000</b>	14,317	4,925	9,392			
<b>2001</b>	14,972	4,675	10,297			
<b>2002</b>	16,306	6,231	10,075			
<b>2003</b>	14,184	5,234	8,950			
<b>2004</b>	12,192	4,584	7,608			
<b>2005</b>	12,893	5,233	7,660			
<b>2006</b>	13,137	5,418	7,719			
<b>1998</b> Q1	3,265	1,333	1,932	3,077	1,276	1,801
Q2	3,251	1,312	1,939	3,262	1,242	2,021
Q3	3,323	1,275	2,048	3,387	1,341	2,046
Q4	3,364	1,296	2,068	3,477	1,358	2,119
<b>1999</b> Q1	3,912	1,379	2,533	3,691	1,320	2,371
Q2	3,590	1,294	2,296	3,624	1,220	2,404
Q3	3,376	1,240	2,136	3,451	1,313	2,139
Q4	3,402	1,296	2,106	3,514	1,356	2,158
<b>2000</b> Q1	3,637	1,210	2,427	3,438	1,157	2,281
Q2	3,370	1,300	2,070	3,385	1,213	2,172
Q3	3,709	1,231	2,478	3,797	1,316	2,480
Q4	3,601	1,184	2,417	3,698	1,239	2,459
<b>2001</b> Q1	3,943	1,359	2,584	3,759	1,314	2,445
Q2	3,684	1,348	2,336	3,709	1,263	2,446
Q3	3,640	940	2,700	3,723	1,023	2,701
Q4	3,705	1,028	2,677	3,781	1,076	2,706
<b>2002</b> Q1	4,141	1,408	2,733	3,979	1,364	2,615
Q2	4,066	1,679	2,387	4,035	1,552	2,483
Q3	3,808	1,390	2,418	3,928	1,502	2,426
Q4	4,291	1,754	2,537	4,364	1,813	2,551
<b>2003</b> Q1	3,797	1,585	2,212	3,688	1,551	2,137
Q2	3,767	1,470	2,297	3,733	1,379	2,355
Q3	3,314	1,075	2,239	3,413	1,165	2,248
Q4	3,306	1,104	2,202	3,349	1,140	2,210
<b>2004</b> Q1	3,248	1,208	2,040	3,181	1,194	1,987
Q2	3,108	1,197	1,911	3,059	1,127	1,933
Q3	2,900	1,061	1,839	2,987	1,127	1,860
Q4	2,936	1,118	1,818	2,964	1,136	1,829
<b>2005</b> Q1	3,010	1,101	1,909	2,959	1,094	1,865
Q2	3,407	1,422	1,985	3,336	1,349	1,987
Q3	3,306	1,454	1,852	3,398	1,522	1,876
Q4	3,170	1,256	1,914	3,200	1,268	1,932
<b>2006</b> Q1	3,564	1,473	2,091	3,520	1,475	2,044
Q2	3,235	1,263	1,972	3,165	1,201	1,964
Q3	3,172	1,286	1,886	3,250	1,335	1,914
Q4	3,166	1,396	1,770	3,202	1,406	1,796
<b>2007</b> Q1	3,146	1,384	1,762	3,097 r	1,382 r	1,714 r
Q2 p	3,087	1,399	1,688	3,032	1,349	1,682
<b>Percentage change, latest qtr on corresponding qtr of previous year</b>						
<b>2007</b> Q2 p	-4.6	10.8	-14.4	-4.2	12.4	-14.4

\* including partnerships.

p provisional.

r revised, reflecting update of seasonally adjusted figures.

## 2. INDIVIDUAL INSOLVENCIES IN ENGLAND AND WALES

Not Seasonally Adjusted				Seasonally Adjusted		
Years	Total	Bankruptcy Orders	Individual Voluntary Arrangements *	Total	Bankruptcy Orders	Individual Voluntary Arrangements *
<b>1998</b>	24,549	19,647	4,902			
<b>1999</b>	28,806	21,611	7,195			
<b>2000</b>	29,528	21,550	7,978			
<b>2001</b>	29,775	23,477	6,298			
<b>2002</b>	30,587	24,292	6,295			
<b>2003</b>	35,604	28,021	7,583			
<b>2004</b>	46,650	35,898	10,752			
<b>2005</b>	67,584	47,291	20,293			
<b>2006</b>	107,288	62,956	44,332			
<b>1998</b> Q1	5,953	4,938	1,015	5,680	4,620	1,061
Q2	5,855	4,755	1,100	5,795	4,681	1,114
Q3	6,380	5,113	1,267	6,265	5,059	1,206
Q4	6,361	4,841	1,520	6,809	5,287	1,522
<b>1999</b> Q1	7,025	5,799	1,226	6,738	5,447	1,291
Q2	7,120	5,527	1,593	7,082	5,458	1,624
Q3	7,592	5,365	2,227	7,451	5,322	2,130
Q4	7,069	4,920	2,149	7,535	5,384	2,150
<b>2000</b> Q1	7,837	5,667	2,170	7,604	5,332	2,272
Q2	7,532	5,414	2,118	7,464	5,334	2,129
Q3	7,316	5,451	1,865	7,167	5,400	1,767
Q4	6,843	5,018	1,825	7,294	5,484	1,810
<b>2001</b> Q1	7,750	6,078	1,672	7,499	5,730	1,769
Q2	7,714	6,115	1,599	7,604	6,011	1,593
Q3	7,434	5,817	1,617	7,297	5,762	1,535
Q4	6,877	5,467	1,410	7,376	5,974	1,401
<b>2002</b> Q1	7,411	6,027	1,384	7,391	5,892	1,500
Q2	7,861	6,269	1,592	7,511	5,938	1,573
Q3	7,892	6,249	1,643	7,754	6,196	1,558
Q4	7,423	5,747	1,676	7,931	6,266	1,664
<b>2003</b> Q1	8,426	6,912	1,514	8,222	6,529	1,693
Q2	8,889	6,948	1,941	8,675	6,781	1,894
Q3	9,291	7,221	2,070	9,124	7,165	1,960
Q4	8,998	6,940	2,058	9,583	7,547	2,036
<b>2004</b> Q1	10,665	8,524	2,141	10,473	8,042	2,431
Q2	11,535	9,060	2,475	11,208	8,825	2,383
Q3	12,227	9,315	2,912	12,020	9,275	2,745
Q4	12,223	8,999	3,224	12,950	9,756	3,193
<b>2005</b> Q1	13,190	10,188	3,002	13,778	10,274	3,504
Q2	16,873	12,338	4,535	15,609	11,232	4,377
Q3	18,010	12,256	5,754	17,703	12,244	5,459
Q4	19,511	12,509	7,002	20,494	13,540	6,953
<b>2006</b> Q1	23,939	16,283	7,656	24,274	15,310	8,964
Q2	26,722	15,489	11,233	25,869	15,090	10,779
Q3	28,083	15,418	12,665	27,430	15,486	11,944
Q4	28,544	15,766	12,778	29,715	17,070	12,645
<b>2007</b> Q1	29,236	17,937	11,299	29,338 r	16,742 r	12,597 r
Q2 p	27,327	16,489	10,838	26,956	16,258	10,698
<b>Percentage change, latest qtr on corresponding qtr of previous year</b>						
<b>2007</b> Q2 p	2.3	6.5	-3.5	4.2	7.7	-0.7

\* including Deeds of Arrangement

p provisional.

r revised, reflecting update of seasonally adjusted figures.

**2b. BANKRUPTCY ORDERS IN ENGLAND AND WALES - BY PETITION TYPE AND TRADING STATUS  
(not seasonally adjusted)**

Years	Total Bankruptcy Orders	Debtor's petitions	Creditor's petitions	Total Bankruptcy Orders	Self-employed	Other individuals
<b>1998</b>	19,647	10,497	9,150	19,647	10,420	9,227
<b>1999</b>	21,611	12,327	9,284	21,611	10,723	10,888
<b>2000</b>	21,550	13,312	8,238	21,550	9,952	11,598
<b>2001</b>	23,477	15,514	7,963	23,477	9,839	13,638
<b>2002</b>	24,292	16,955	7,337	24,292	8,854	15,438
<b>2003</b>	28,021	19,882	8,139	28,021	9,139	18,882
<b>2004</b>	35,898	27,872	8,026	35,898	9,564	26,334
<b>2005</b>	47,291	38,131	9,160	47,291	10,839	36,452
<b>2006</b>	62,956	53,038	9,918	62,956	10,894	52,062
<b>1998</b> Q1	4,938	2,771	2,167	4,938	2,637	2,301
Q2	4,755	2,476	2,279	4,755	2,521	2,234
Q3	5,113	2,613	2,500	5,113	2,672	2,441
Q4	4,841	2,637	2,204	4,841	2,590	2,251
<b>1999</b> Q1	5,799	3,336	2,463	5,799	2,996	2,803
Q2	5,527	3,096	2,431	5,527	2,721	2,806
Q3	5,365	3,102	2,263	5,365	2,614	2,751
Q4	4,920	2,793	2,127	4,920	2,392	2,528
<b>2000</b> Q1	5,667	3,554	2,113	5,667	2,571	3,096
Q2	5,414	3,276	2,138	5,414	2,519	2,895
Q3	5,451	3,292	2,159	5,451	2,518	2,933
Q4	5,018	3,190	1,828	5,018	2,344	2,674
<b>2001</b> Q1	6,078	3,987	2,091	6,078	2,666	3,412
Q2	6,115	3,890	2,225	6,115	2,609	3,506
Q3	5,817	3,889	1,928	5,817	2,414	3,403
Q4	5,467	3,748	1,719	5,467	2,150	3,317
<b>2002</b> Q1	6,027	4,223	1,804	6,027	2,261	3,766
Q2	6,269	4,333	1,936	6,269	2,235	4,034
Q3	6,249	4,374	1,875	6,249	2,244	4,005
Q4	5,747	4,025	1,722	5,747	2,114	3,633
<b>2003</b> Q1	6,912	4,892	2,020	6,912	2,468	4,444
Q2	6,948	4,851	2,097	6,948	2,267	4,681
Q3	7,221	5,148	2,073	7,221	2,296	4,925
Q4	6,940	4,991	1,949	6,940	2,108	4,832
<b>2004</b> Q1	8,524	6,472	2,052	8,524	2,437	6,087
Q2	9,060	7,028	2,032	9,060	2,455	6,605
Q3	9,315	7,236	2,079	9,315	2,300	7,015
Q4	8,999	7,136	1,863	8,999	2,372	6,627
<b>2005</b> Q1	10,188	8,219	1,969	10,188	2,446	7,742
Q2	12,338	9,840	2,498	12,338	2,835	9,503
Q3	12,256	9,902	2,354	12,256	2,850	9,406
Q4	12,509	10,170	2,339	12,509	2,708	9,801
<b>2006</b> Q1	16,283	13,492	2,791	16,283	3,150	13,133
Q2	15,489	13,086	2,403	15,489	2,898	12,591
Q3	15,418	13,036	2,382	15,418	2,990	12,428
Q4	15,766	13,424	2,342	15,766	1,856 *	13,910 *
<b>2007</b> Q1	17,937	15,356	2,581	17,937	1,981 *	15,956 *
Q2 p	16,489	13,923	2,566	..	..	..

p provisional.

\*Changes have been made to the part of the database used to capture information on trading status and industry codes. From 2006 Q4, "self-employed" includes the categories "self-employed"; "trader but failure not as a result of trading" and "trading partnership" and "other individuals" includes "non-trading"; "non-surrender" and "unknown". The breakdown by trading status from Q4 2006 should not therefore be considered to be entirely consistent with that for the earlier period.

.. not yet available

## 2c. BANKRUPTCY RESTRICTIONS AND INCOME PAYMENTS IN ENGLAND AND WALES \*

Years	Total	Bankruptcy Restriction Orders	Bankruptcy Restriction Undertakings	Total	Income Payment Orders	Income Payment Agreements
<b>1998</b>	:	:	:	1,487	1,487	:
<b>1999</b>	:	:	:	1,799	1,799	:
<b>2000</b>	:	:	:	1,811	1,811	:
<b>2001</b>	:	:	:	1,947	1,947	:
<b>2002</b>	:	:	:	1,893	1,893	:
<b>2003</b>	:	:	:	2,357	2,265	92
<b>2004</b>	3	0	3	6,254	1,254	5,000
<b>2005</b>	387	116	271	9,102	69	9,033
<b>2006</b>	1,816	276	1,540	11,990	86	11,904
<b>1998</b> Q1	:	:	:	272	272	:
Q2	:	:	:	353	353	:
Q3	:	:	:	395	395	:
Q4	:	:	:	467	467	:
<b>1999</b> Q1	:	:	:	420	420	:
Q2	:	:	:	458	458	:
Q3	:	:	:	461	461	:
Q4	:	:	:	460	460	:
<b>2000</b> Q1	:	:	:	434	434	:
Q2	:	:	:	426	426	:
Q3	:	:	:	467	467	:
Q4	:	:	:	484	484	:
<b>2001</b> Q1	:	:	:	508	508	:
Q2	:	:	:	405	405	:
Q3	:	:	:	545	545	:
Q4	:	:	:	489	489	:
<b>2002</b> Q1	:	:	:	474	474	:
Q2	:	:	:	408	408	:
Q3	:	:	:	502	502	:
Q4	:	:	:	509	509	:
<b>2003</b> Q1	:	:	:	402	400	2
Q2	:	:	:	478	466	12
Q3	:	:	:	738	706	32
Q4	:	:	:	739	693	46
<b>2004</b> Q1	:	:	:	799	725	74
Q2	:	:	:	1,257	413	844
Q3	:	:	:	2,140	90	2,050
Q4	3	0	3	2,058	26	2,032
<b>2005</b> Q1	18	4	14	1,430	25	1,405
Q2	55	13	42	1,882	11	1,871
Q3	110	38	72	2,900	12	2,888
Q4	204	61	143	2,890	21	2,869
<b>2006</b> Q1	474	78	396	1,973	29	1,944
Q2	386	61	325	2,532	21	2,511
Q3	358	69	289	3,798	20	3,778
Q4	598	68	530	3,687	16	3,671
<b>2007</b> Q1	525	66	459	2,483	23	2,460
Q2 p	482	67	415	2,743	19	2,724

p provisional.

: not applicable

\* See "Notes to Editors" paragraphs 10 and 11.

**3. RECEIVERSHIPS, ADMINISTRATIONS AND COMPANY VOLUNTARY  
ARRANGEMENTS IN ENGLAND AND WALES REGISTERED AT  
COMPANIES HOUSE (not seasonally adjusted)**

Year	Receivership Appointments	Administrator Appointments*	In Administration (Enterprise Act 2002)*	Company Voluntary Arrangements
<b>1998</b>	1,713	338	:	470
<b>1999</b>	1,618	440	:	475
<b>2000</b>	1,595	438	:	557
<b>2001</b>	1,914	698	:	597
<b>2002</b>	1,541	643	:	651
<b>2003</b>	1,261	497	247	726
<b>2004</b>	864	1	1,601	597
<b>2005</b>	590	4	2,257	604
<b>2006</b>	588	0	3,560	534
<b>1998</b> Q1	516	85	:	54
Q2	395	46	:	127
Q3	443	105	:	153
Q4	359	102	:	136
<b>1999</b> Q1	419	193	:	106
Q2	397	81	:	128
Q3	375	64	:	120
Q4	427	102	:	121
<b>2000</b> Q1	454	89	:	124
Q2	429	135	:	160
Q3	355	101	:	121
Q4	357	113	:	152
<b>2001</b> Q1	649	125	:	132
Q2	435	141	:	163
Q3	369	146	:	141
Q4	461	286	:	161
<b>2002</b> Q1	455	176	:	151
Q2	346	151	:	151
Q3	377	162	:	181
Q4	363	154	:	168
<b>2003</b> Q1	315	160	:	178
Q2	298	167	:	165
Q3	334	154	14	171
Q4	314	16	233	212
<b>2004</b> Q1	224	1	331	176
Q2	199	0	392	154
Q3	203	0	421	137
Q4	238	0	457	130
<b>2005</b> Q1	114	0	489	179
Q2	167	4	568	183
Q3	170	0	620	130
Q4	139	0	580	112
<b>2006</b> Q1	180	0	753	124
Q2	153	0	653	147
Q3	93	0	675	157
Q4	162	0	1,479	106
<b>2007</b> Q1	111	0	699	100
Q2 p	129	0	565	99

p provisional  
: not applicable

\* See paragraph 7 of the Press Release "Notes to Editors" for changes wef 15 September 2003 under the Enterprise Act 2002

## 4. COMPANY LIQUIDATIONS\* IN ENGLAND AND WALES - INDUSTRIAL ANALYSIS

NOT SEASONALLY ADJUSTED

---

### INDUSTRY

---

#### AGRICULTURE AND HORTICULTURE

#### MANUFACTURING

Food, drink and tobacco  
Chemicals  
Metals and engineering  
Textiles and clothing  
Timber and furniture  
Paper, printing and publishing  
Other  
**TOTAL**

Company Liquidations by industry are currently under development to adhere to the Standard Industrial Classification 2003 (SIC 2003). Data according to this breakdown are not yet available. The breakdown according to the previously used Insolvency Trade Classification (ITC) is available up to 2006 Quarter 3 and can be found at <http://www.insolvency.gov.uk/otherinformation/statistics/200702/table4.htm>.

#### CONSTRUCTION AND TRANSPORT

Construction  
Transport and Communication  
**TOTAL**

#### WHOLESALE

Food, drink and tobacco  
Motor vehicles  
Other  
**TOTAL**

#### RETAILING

Food, drink and tobacco  
Motor vehicles and filling stations  
Other  
**TOTAL**

#### SERVICES

Insurance  
Other financial & business services  
Hotels and Catering  
**TOTAL**

#### OTHERS

### **TOTAL**

---

\* including partnerships.

## 5. BANKRUPTCIES IN ENGLAND AND WALES - INDUSTRIAL ANALYSIS

NOT SEASONALLY ADJUSTED

---

### INDUSTRY

---

#### SELF EMPLOYED

##### AGRICULTURE AND HORTICULTURE

##### MANUFACTURING

Food, drink and tobacco  
Chemicals  
Metals and engineering  
Textiles and clothing  
Timber and furniture  
Paper, printing and publishing  
Other

**TOTAL**

##### CONSTRUCTION AND TRANSPORT

Construction  
Transport and communication

**TOTAL**

##### WHOLESALE

Food, drink and tobacco  
Motor vehicles  
Other

**TOTAL**

##### RETAILING

Food, drink and tobacco  
Motor vehicles and filling stations  
Other

**TOTAL**

##### SERVICES

Insurance  
Other financial & business services  
Hotels and catering

**TOTAL**

##### OTHER

#### **TOTAL SELF-EMPLOYED**

#### OTHER INDIVIDUALS

Employees  
No occupation and unemployed  
Directors & promoters of companies  
Occupation unknown

#### **TOTAL OTHER INDIVIDUALS**

#### **TOTAL BANKRUPTCIES**

---

Bankruptcies by industry are currently under development to adhere to the Standard Industrial Classification 2003 (SIC 2003). Data according to this breakdown are not yet available. The breakdown according to the previously used Insolvency Trade Classification (ITC) is available up to 2006 Quarter 3 and can be found at <http://www.insolvency.gov.uk/otherinformation/statistics/200702/table5.htm>.

However, bankruptcy orders split into self-employed and other individuals may be seen under Table 2b, up to and including Quarter 1 2007.

## 6. INSOLVENCIES IN SCOTLAND (not seasonally adjusted)

Years	Individuals			Companies		
	Total	Sequestrations	Protected Trust Deeds	Total	Compulsory Liquidations	Creditors' Voluntary Liquidations
<b>1998</b>	4,465	3,016	1,449	566	338	228
<b>1999</b>	5,339	3,195	2,144	572	364	208
<b>2000</b>	5,766	2,965	2,801	583	344	239
<b>2001</b>	6,827	3,048	3,779	602	378	224
<b>2002</b>	8,389	3,215	5,174	788	556	232
<b>2003</b>	8,780	3,328	5,452	631	436	195
<b>2004</b>	9,321	3,297	6,024	621	431	190
<b>2005</b>	11,846	4,965	6,881	569	420	149
<b>2006</b>	13,638	5,430	8,208	549	416	133
<b>1998</b> Q1	1,016	702	314	150	79	71
Q2	1,171	756	415	151	93	58
Q3	1,172	830	342	124	82	42
Q4	1,106	728	378	141	84	57
<b>1999</b> Q1	1,213	776	437	153	83	70
Q2	1,311	807	504	136	89	47
Q3	1,451	842	609	144	98	46
Q4	1,364	770	594	139	94	45
<b>2000</b> Q1	1,395	751	644	136	75	61
Q2	1,527	751	776	153	92	61
Q3	1,391	712	679	139	85	54
Q4	1,453	751	702	155	92	63
<b>2001</b> Q1	1,503	709	794	166	102	64
Q2	1,746	750	996	141	82	59
Q3	1,881	839	1,042	108	75	33
Q4	1,697	750	947	187	119	68
<b>2002</b> Q1	1,858	832	1,026	240	170	70
Q2	2,136	797	1,339	175	123	52
Q3	2,247	834	1,413	184	139	45
Q4	2,148	752	1,396	189	124	65
<b>2003</b> Q1	2,015	799	1,216	183	133	50
Q2	2,189	858	1,331	168	118	50
Q3	2,367	845	1,522	154	109	45
Q4	2,209	826	1,383	126	76	50
<b>2004</b> Q1	2,154	720	1,434	153	95	58
Q2	2,160	851	1,309	147	110	37
Q3	2,441	923	1,518	168	113	55
Q4	2,566	803	1,763	153	113	40
<b>2005</b> Q1	2,462	908	1,554	140	103	37
Q2	2,830	1,307	1,523	159	120	39
Q3	3,593	1,461	2,132	151	115	36
Q4	2,961	1,289	1,672	119	82	37
<b>2006</b> Q1	3,111	1,241	1,870	128	96	32
Q2	3,544	1,305	2,239	133	99	34
Q3	3,601	1,528	2,073	156	132	24
Q4	3,382	1,356	2,026	132	89	43
<b>2007</b> Q1	3,471	1,505	1,966	166	132	34
Q2 p	3,498	1,606	1,892	165	131	34
<b>Percentage change, latest qtr on corresponding qtr of previous year</b>						
<b>2007</b> Q2 p	-1.3	23.1	-15.5	24.1	32.3	0.0

p provisional

## 6b. COMPANY LIQUIDATIONS IN SCOTLAND - STANDARD INDUSTRIAL CLASSIFICATION (SIC 2003) ANALYSIS

### NOT SEASONALLY ADJUSTED

SIC(03)				2007 *		
Section	Sub section	2 digit	3 digit	Description	Q1	Q2p
Section A				<i>AGRICULTURE, HUNTING AND FORESTRY</i>	<i>1</i>	<i>0</i>
Section B				<i>FISHING</i>	<i>0</i>	<i>0</i>
Section C				<i>MINING AND QUARRYING</i>	<i>0</i>	<i>0</i>
Section D				<i>MANUFACTURING</i>		
	DA			Food products, beverages and tobacco	0	1
	DB			Textiles and textile products	4	1
	DC			Leather and leather products	0	0
	DD			Wood and wood products	0	1
	DE			Pulp, paper and paper products publishing and printing	0	5
	DF			Coke, refined petroleum products and nuclear fuel	0	0
	DG			Chemicals, chemical products and man-made fibres	0	0
	DH			Rubber and plastic products	0	0
	DI			Other non-metallic mineral products	1	0
	DJ			Basic metals and fabricated metal products	3	4
	DK			Machinery and equipment not elsewhere classified	1	0
	DL			Electrical and optical equipment	1	1
	DM			Transport equipment	0	1
	DN			Not elsewhere classified	2	4
				<i>TOTAL</i>	<i>12</i>	<i>18</i>
Section E				<i>ELECTRICITY, GAS AND WATER SUPPLY</i>	<i>0</i>	<i>1</i>
Section F		45		<i>CONSTRUCTION</i>		
		451		Site preparation	0	0
		452		Building of complete constructions or parts thereof; civil engineering	14	9
		453		Building installation	2	9
		454		Building completion	5	4
		455		Renting of construction or demolition equipment with operator	2	0
				<i>TOTAL</i>	<i>23</i>	<i>22</i>
Section G				<i>WHOLESALE AND RETAIL TRADE; REPAIR OF MOTOR VEHICLES, MOTOR CYCLES AND PERSONAL AND HOUSEHOLD GOODS</i>		
		50		Sale, maintenance and repair of motor vehicles and motorcycles; retail sale of automotive fuel	4	1
		51		Wholesale trade and commission trade, except of motor vehicles and motorcycles	2	5
		52		Retail trade, except of motor vehicles and motorcycles; repair of personal and household goods	8	13
				<i>TOTAL</i>	<i>14</i>	<i>19</i>

Section H	55	<i>HOTELS AND RESTAURANTS</i>		
	551	Hotels	1	2
	553	Restaurants	9	4
	554	Bars	10	6
		Other	5	2
		<b>TOTAL</b>	<b>25</b>	<b>14</b>
Section I		<i>TRANSPORT, STORAGE AND COMMUNICATION</i>		
	60	Land transport; transport via pipelines	1	7
	61	Water transport	0	2
	62	Air transport	0	1
	63	Supporting and auxiliary transport activities; activities of travel agencies	1	1
	64	Post and telecommunications	0	0
		<b>TOTAL</b>	<b>2</b>	<b>11</b>
Section J		<i>FINANCIAL INTERMEDIATION</i>		
	66	Insurance and pension funding, except compulsory social security	1	0
		Other	0	0
		<b>TOTAL</b>	<b>1</b>	<b>0</b>
Section K		<i>REAL ESTATE, RENTING AND BUSINESS ACTIVITIES</i>		
	70	Real estate activities	6	8
	71	Renting of machinery and equipment without operator and of personal and household goods	2	1
	72	Computer and related activities	10	4
	73	Research and development	1	0
	74	Other business activities	52	58
		<b>TOTAL</b>	<b>71</b>	<b>71</b>
Section L		<i>PUBLIC ADMINISTRATION AND DEFENCE; COMPULSORY SOCIAL SECURITY</i>	1	0
Section M		<i>EDUCATION</i>	1	2
Section N		<i>HEALTH AND SOCIAL WORK</i>	0	1
Section O		<i>OTHER COMMUNITY, SOCIAL &amp; PERSONAL SERVICE ACTIVITIES</i>	8	4
		ALL OTHERS	7	2
		<b>TOTAL</b>	<b>166</b>	<b>165</b>

\* Prior to Q1 2007, company liquidations in Scotland were classified according to the Insolvency Trade Classifications (ITC); these breakdowns are available at <http://www.insolvency.gov.uk/otherinformation/statistics/200702/table7.htm> from Q1 1998 to Q4 2006.

p provisional.

**7. RECEIVERSHIPS, ADMINISTRATIONS AND COMPANY VOLUNTARY  
ARRANGEMENTS IN SCOTLAND REGISTERED AT COMPANIES HOUSE  
(SCOTLAND) (not seasonally adjusted)**

Year	Receivership Appointments	Administrator Appointments*	In Administration (Enterprise Act 2002)*	Company Voluntary Arrangements
<b>1998</b>	83	3	:	2
<b>1999</b>	69	3	:	0
<b>2000</b>	108	6	:	2
<b>2001</b>	97	4	:	3
<b>2002</b>	118	12	:	2
<b>2003</b>	118	6	3	7
<b>2004</b>	82	0	31	6
<b>2005</b>	56	0	55	8
<b>2006</b>	34	0	86	5
<b>1998</b> Q1	16	2	:	0
Q2	17	1	:	2
Q3	19	0	:	0
Q4	31	0	:	0
<b>1999</b> Q1	22	3	:	0
Q2	21	0	:	0
Q3	17	0	:	0
Q4	9	0	:	0
<b>2000</b> Q1	24	2	:	1
Q2	35	1	:	0
Q3	30	0	:	1
Q4	19	3	:	0
<b>2001</b> Q1	26	2	:	1
Q2	27	1	:	1
Q3	19	1	:	1
Q4	25	0	:	0
<b>2002</b> Q1	26	5	:	0
Q2	26	3	:	1
Q3	29	3	:	1
Q4	37	1	:	0
<b>2003</b> Q1	41	4	:	0
Q2	21	1	:	3
Q3	36	1	1	1
Q4	20	0	2	3
<b>2004</b> Q1	30	0	9	1
Q2	23	0	11	4
Q3	13	0	7	0
Q4	16	0	4	1
<b>2005</b> Q1	27	0	8	1
Q2	9	0	7	4
Q3	12	0	19	2
Q4	8	0	21	1
<b>2006</b> Q1	11	0	28	2
Q2	16	0	20	1
Q3	3	0	18	1
Q4	4	0	20	1
<b>2007</b> Q1	9	0	15	2
Q2 p	22	0	11	1

p provisional  
: not applicable

\* See paragraph 7 of the Press Release "Notes to Editors" for changes wef 15 September 2003 under the Enterprise Act 2002

## 8. INSOLVENCIES IN NORTHERN IRELAND (not seasonally adjusted)

Years	Individuals			Companies		
	Total	Bankruptcy Orders	Individual Voluntary Arrangements	Total	Compulsory Liquidations	Creditors' Voluntary Liquidations
<b>1998</b>	517	394	123	..	63	..
<b>1999</b>	573	401	172	..	58	..
<b>2000</b>	616	349	267	..	83	..
<b>2001</b>	468	292	176	..	60	..
<b>2002</b>	541	334	207	102	49	53
<b>2003</b>	835	517	318	142	95	47
<b>2004</b>	1,115	666	449	121	76	45
<b>2005</b>	1,454	821	633	138	85	53
<b>2006</b>	1,810	1,036	774	128	78	50
<b>1998</b> Q1	130	99	31	..	17	..
Q2	150	118	32	..	22	..
Q3	108	82	26	..	12	..
Q4	129	95	34	..	12	..
<b>1999</b> Q1	147	110	37	..	16	..
Q2	131	100	31	..	14	..
Q3	108	68	40	..	14	..
Q4	187	123	64	..	14	..
<b>2000</b> Q1	202	104	98	..	22	..
Q2	171	116	55	..	27	..
Q3	110	54	56	..	15	..
Q4	133	75	58	..	19	..
<b>2001</b> Q1	137	86	51	..	16	..
Q2	137	88	49	..	18	..
Q3	79	37	42	..	11	..
Q4	115	81	34	..	15	..
<b>2002</b> Q1	121	74	47	24	12	12
Q2	143	85	58	19	5	14
Q3	121	74	47	33	17	16
Q4	156	101	55	26	15	11
<b>2003</b> Q1	146	90	56	37	30	7
Q2	219	141	78	42	25	17
Q3	205	109	96	29	19	10
Q4	265	177	88	34	21	13
<b>2004</b> Q1	253	155	98	35	19	16
Q2	282	173	109	39	27	12
Q3	286	165	121	28	20	8
Q4	294	173	121	19	10	9
<b>2005</b> Q1	302	174	128	29	15	14
Q2	438	241	197	47	28	19
Q3	320	193	127	31	19	12
Q4	394	213	181	31	23	8
<b>2006</b> Q1	408	245	163	29	19	10
Q2	495	286	209	41	24	17
Q3	425	241	184	28	15	13
Q4	482	264	218	30	20	10
<b>2007</b> Q1	343	218	125	36	29	7
Q2 p	338	228	110	38	29	9
<b>Percentage change, latest qtr on corresponding qtr of previous year</b>						
<b>2007</b> Q2 p	-31.7	-20.3	-47.4	-7.3	20.8	-47.1

p provisional

.. not available

**9. ANNUAL RATE OF COMPANY LIQUIDATIONS (for latest 12 months) - COMPANY LIQUIDATIONS AS A PERCENTAGE OF THE NUMBER OF COMPANIES REGISTERED**

Years	England & Wales		Scotland		
	% of Active Register	% of Total Register	% of Active Register	% of Total Register	
<b>1998</b>	Q1	1.2	1.0	0.8	0.7
	Q2	1.2	1.0	0.8	0.7
	Q3	1.2	1.0	0.8	0.7
	Q4	1.2	1.0	0.9	0.8
<b>1999</b>	Q1	1.2	1.1	0.8	0.8
	Q2	1.2	1.1	0.8	0.7
	Q3	1.2	1.1	0.8	0.8
	Q4	1.2	1.0	0.8	0.7
<b>2000</b>	Q1	1.1	1.0	0.8	0.7
	Q2	1.1	1.0	0.8	0.7
	Q3	1.1	1.0	0.8	0.7
	Q4	1.1	1.0	0.8	0.7
<b>2001</b>	Q1	1.1	1.0	0.8	0.7
	Q2	1.1	1.0	0.8	0.7
	Q3	1.1	1.0	0.7	0.7
	Q4	1.1	1.0	0.8	0.7
<b>2002</b>	Q1	1.1	1.0	0.9	0.8
	Q2	1.1	1.0	0.9	0.8
	Q3	1.1	1.0	1.0	0.9
	Q4	1.1	1.0	1.0	0.9
<b>2003</b>	Q1	1.1	1.0	0.9	0.8
	Q2	1.0	0.9	0.8	0.8
	Q3	1.0	0.9	0.8	0.7
	Q4	0.9	0.8	0.7	0.6
<b>2004</b>	Q1	0.8	0.8	0.6	0.6
	Q2	0.8	0.7	0.6	0.5
	Q3	0.7	0.7	0.6	0.5
	Q4	0.7	0.6	0.6	0.6
<b>2005</b>	Q1	0.7	0.6	0.6	0.5
	Q2	0.7	0.6	0.6	0.5
	Q3	0.7	0.6	0.6	0.5
	Q4	0.7	0.6	0.5	0.5
<b>2006</b>	Q1	0.7	0.6	0.5	0.5
	Q2	0.7	0.6	0.5	0.4
	Q3	0.7	0.6	0.5	0.4
	Q4	0.6	0.6	0.5	0.4
<b>2007</b>	Q1	0.6	0.6	0.5	0.5
	Q2 p	0.6	0.5	0.5	0.5

p provisional

Notes:

1. The total register includes companies being wound up or dormant.
2. Calculated from company liquidations in the latest twelve month period divided by the average number of companies in that period.